

ABOUT PARCS

Payson is a bicyclist's paradise, offering entry to some of the best-kept secrets in the State of Arizona. Inviting weather year-round, unique wildlife, breathtaking mountains, lush natural areas, and quaint Small-Town charm can all be found on the paved roads described in this brochure.

So check the tire pressure, strap on your helmet, fill the water bottle, scan the skyline, and enjoy your ride!

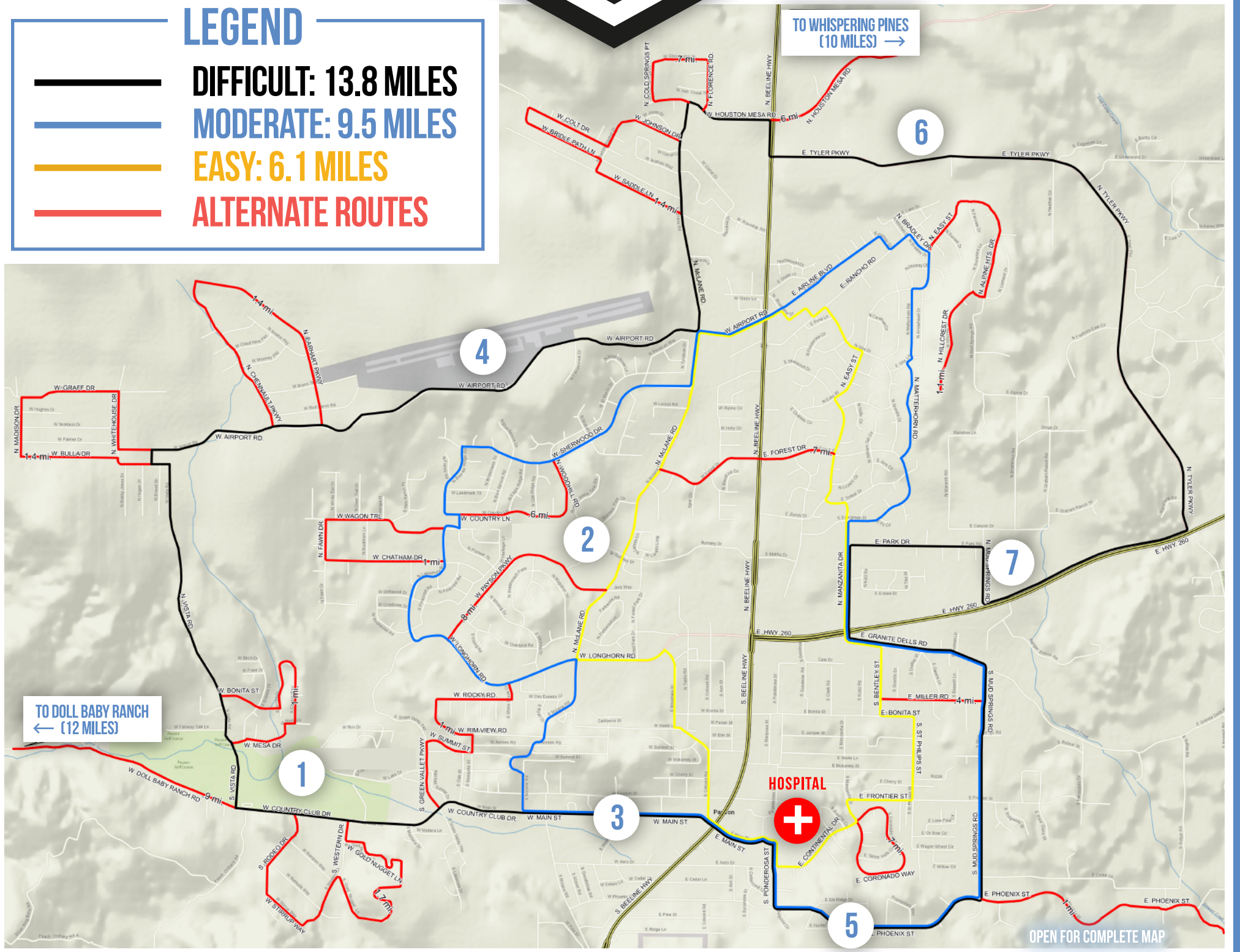


POINTS OF INTEREST

- 1 GREEN VALLEY PARK
- 2 RUMSEY PARK
- 3 HISTORIC MAIN STREET
- 4 PAYSON AIRPORT
- 5 METATE POCKET PARK
- 6 GOAT CAMP RUIN
- 7 JIMMY HARRIS TRAIL ACCESS

LEGEND

- DIFFICULT: 13.8 MILES
- MODERATE: 9.5 MILES
- EASY: 6.1 MILES
- ALTERNATE ROUTES



SHARE YOUR ADVENTURES
@ADVENTUREPAYSON



RESOURCES:

TOWN OF PAYSON
(928) 474-5242

PAYSON POLICE DEPARTMENT
(928) 474-5177

ARIZONA GAME AND FISH
(602) 942-3000

TONTO NATIONAL FOREST SVC
(602) 225-5200

GILA COUNTY SHERIFF'S OFFICE
(602) 474-2208

DEVELOPED & DISTRIBUTED BY:

TOWN OF PAYSON
PARKS, RECREATION & TOURISM DEPARTMENT
1000 W COUNTRY CLUB DR
PAYSON, ARIZONA 85541
(928) 472-5110
PAYSONRIMCOUNTRY.COM

SPONSORED AND PRINTED BY:



find your next adventure at
PAYSONRIMCOUNTRY.COM





WHAT IS PATS?

The Payson Area Trails System (PATS) is an in-progress interconnecting trails system connecting existing USFS trails on the periphery of Payson with detached pathways and routes adjacent to Payson neighborhood streets. When completed, PATS will include approximately 20 miles of existing USFS trails and 20+ future miles within Payson town limits.



TRAIL SAFETY & ETIQUETTE

- Observe all trail signs, including permitted trail user types.
- Select trails within your ability level, as many trails are quite strenuous.
- Be aware of changing weather and terrain conditions, which can change quickly, especially during monsoon season.
- Always leave the trail better than you found it. Never litter.
- Remember "wheels yield to heels". Bicyclists yield to all other trail users. Hikers yield to horse-back riders.
- Pets are permitted, but must be leashed at all times. Be courteous and prepared to clean up after your pet.
- Never stop where you obstruct the trail or are not visible to others.
- Never interact with wild animals. Respect landowner privacy. Many trails pass through residential areas.
- If you pass through a gate, always be sure to close it behind you.
- Use all Payson Area Trails courteously.

TRAIL HIGHLIGHTS

TOP ATV TRAILS



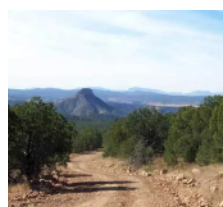
- PEACH ORCHARD
- EVENT CENTER
- AMERICAN GULCH

TOP CYCLING TRAILS



- MONUMENT PEAK
- BOULDERS LOOP

TOP EQUESTRIAN TRAILS

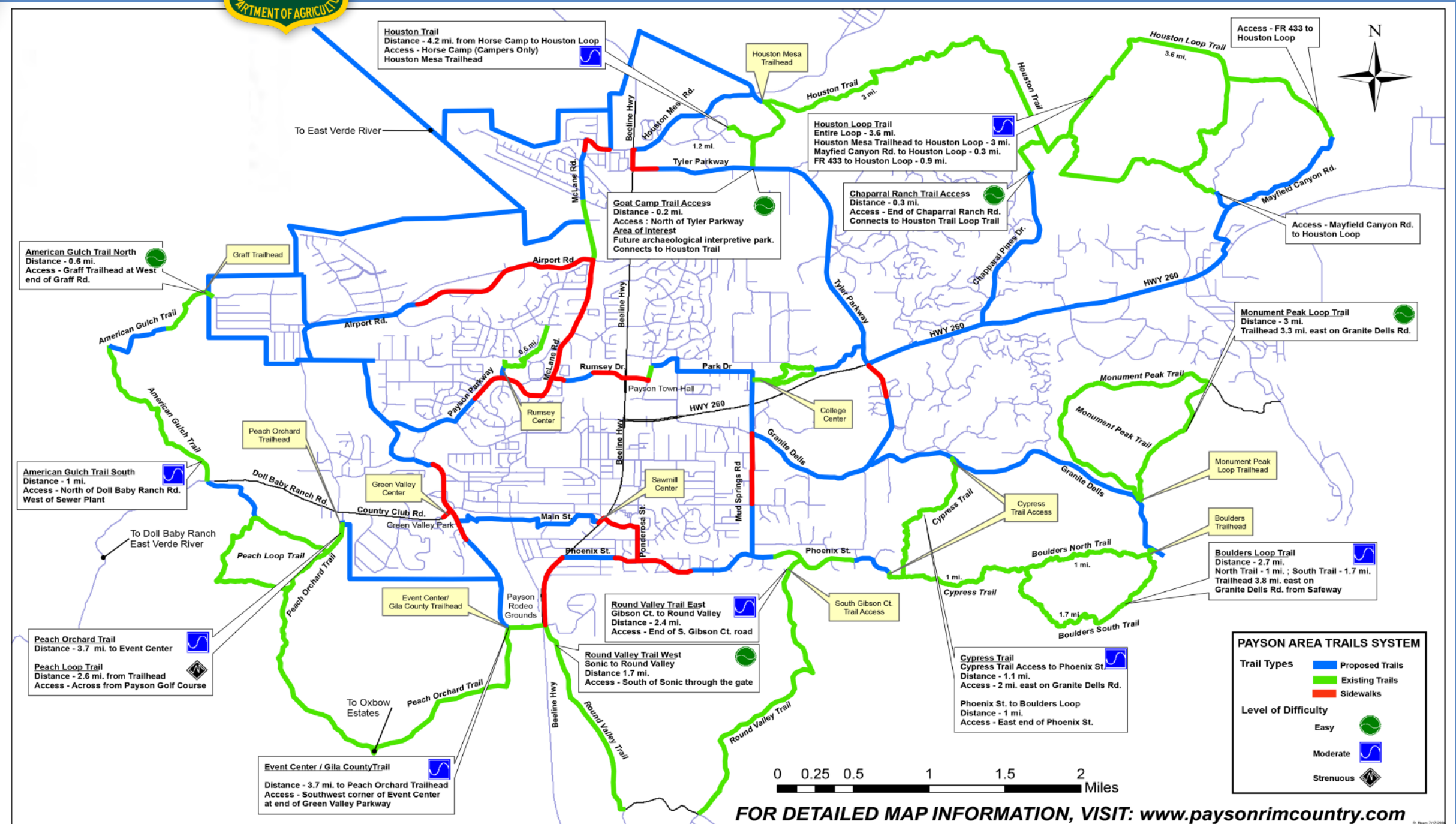


- ROUND VALLEY E.
- HOUSTON MESA
- PEACH ORCHARD
- EVENT CENTER

TOP SCENIC TRAILS



- BOULDERS LOOP
- PEACH ORCHARD



DO YOU HAVE QUESTIONS? FIND MORE INFORMATION AT PAYSONRIMCOUNTRY.COM/TRAILS